

MAKING  
SENSE OF



YOUR  
ELECTRICITY



YOUR



Electricity  
Transport  
Taxes

PAYS FOR THREE THINGS:

Electricity

WHAT IS IT?



**PRODUCTION**  
in power plants

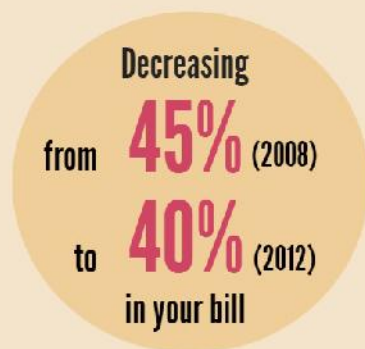
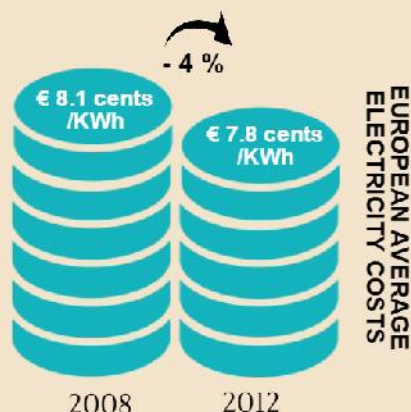


**TRADING & SELLING**  
to customers



**CUSTOMER SERVICE**

HOW MUCH DO YOU  
PAY FOR THIS?



WHAT IS IT?

Transport



**DELIVERY**  
of electricity  
to your home



**CONSTRUCTION,  
MAINTENANCE &  
MODERNISATION**  
of power lines

HOW MUCH DO YOU  
PAY FOR THIS?



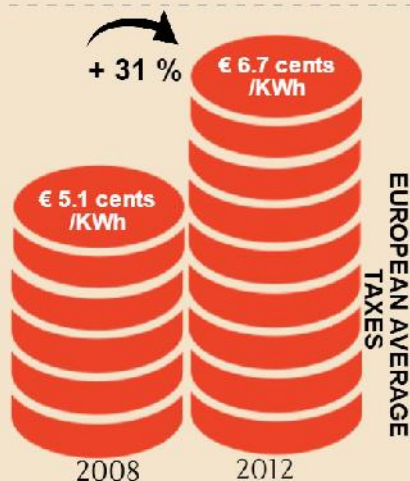
# Taxes



An array of **TAXES & POLICY COSTS** decided by governments

- Renewables support
- Value added tax (VAT)
- Combined heat & power support
- Vulnerable customers
- Nuclear decommissioning
- ...

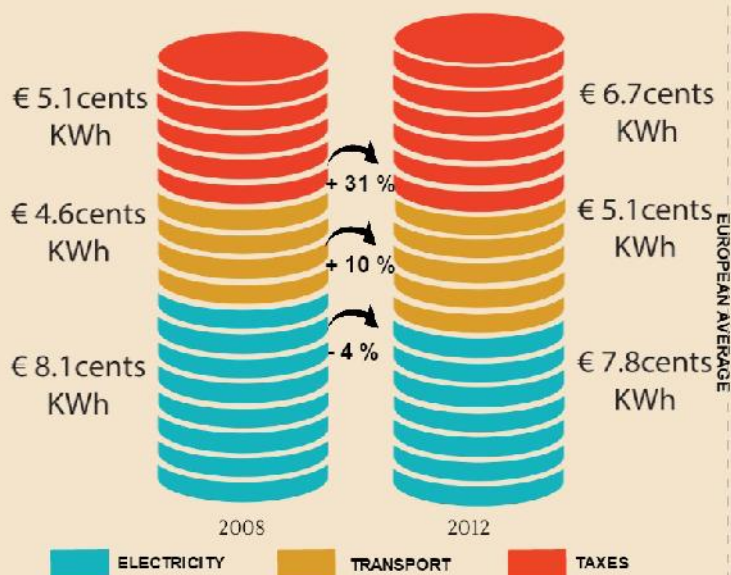
HOW MUCH DO YOU PAY FOR THIS?



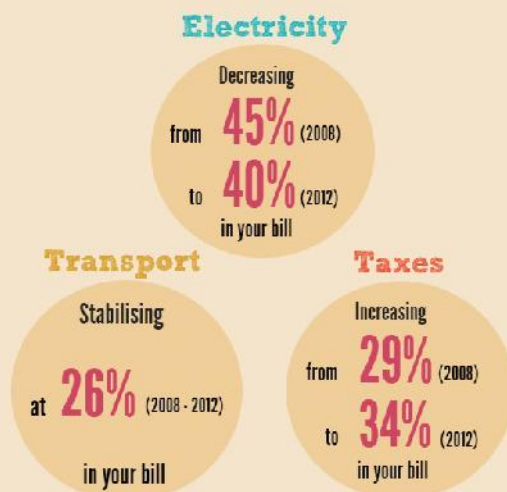
Increasing from **29%** (2008) to **34%** (2012) in your bill

## To sum up: Evolution of your Bill

In absolute values



In respective shares



For more information: [www.eurelectric.org/consumers/prices](http://www.eurelectric.org/consumers/prices)

Union of the Electricity Industry - EURELECTRIC

Boulevard de l'Impératrice, 66 boîte 2  
1000 Brussels  
Belgium  
T.: + 32 (0)2 515 10 00 - F.: + 32 (0)2 515 10 10  
website: [www.eurelectric.org](http://www.eurelectric.org)  
twitter.com/EURELECTRIC

